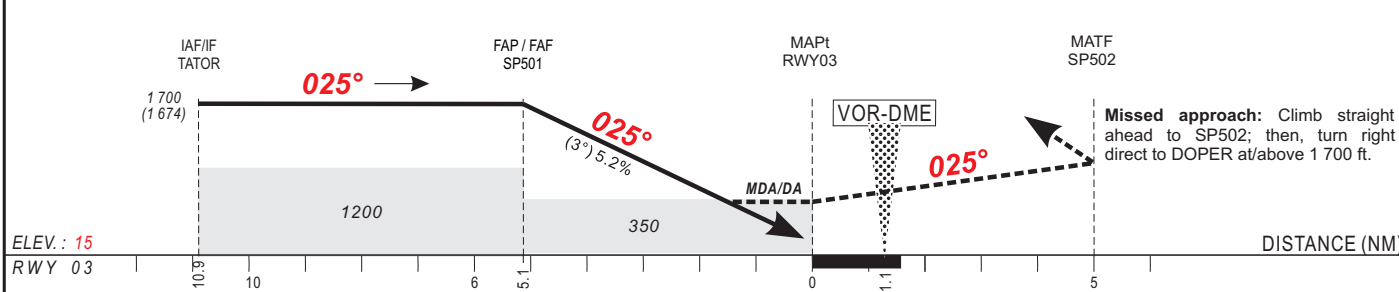


Distance to THR (NM)	FAP/FAF		6	5	4	3	2	1	Notes: - RDH : 15 m - Minimum temperature : 10°C
Altitude (ft)	1700			1670	1350	1030	720	400	



CAT	LNAV/VNAV (1)				LNAV			CIRCLING (2)				RVR for take-off: CATA - B - C : 400
	OCA (OCH)	DA	DH	RVR	OCA (OCH)	MDA	MDH	RVR	OCA (OCH)	MDA	MDH	
A	443 (417)	450 (420)	1500		444 (418)	450 (420)	1500		768 (740)	770 (740)	1500	
B	443 (417)	450 (420)	1500		444 (418)	450 (420)	1500		768 (740)	770 (740)	1600	
C	443 (417)	450 (420)	1800		444 (418)	450 (420)	1800		867 (839)	870 (840)	2400	
D												

Notes : - (1) Not authorized with a remote QNH.
- (2) OCH and MDH AAL

KT	FAF / THR 5.1 NM		KT	THR	
	MIN	SEC		MIN	SEC
90	3	24	140	2	11
100	3	04	150	2	02
110	2	47	160	1	55
120	2	33	170		
130	2	21	180		

AMDT 03/22 : Magnetic variation & bearing